

This cube is one of three cubes related to democracy as a political system (political system cubes: Human rights, Participation, Rule of Law).

Human Rights & Democracy: Guarantee of the right to physical integrity and the rights to free conduct of life are prerequisites for democratic self- and co-determination as is the commitment to safeguard fundamental human rights.

Human rights are one of the essential principles of democracy. Valuing human dignity is key for democracy as a way of living and a form of society.

Interpretation - Suggestions



Human Dignity, Freedom and Equality

right to life, liberty and security, right to physical integrity, born free and equal in dignity and rights



Cultural Diversity, Freedom of Thought

right to recognition, freedom of conscience, freedom of cultural practices, no distinction shall be made



Right to Education, Equal Access to Education

free education, quality education, lifelong learning, development of human personality



Basic Needs

right to (clean) water and sanitation, healthcare, standard of living, the third generation of rights



Individual Diversity, Non-Discrimination

freedom of conduct, right to private life, gender identity, gender-diversity, diversity of sexual orientation



Right to Food

growth, providing for oneself, basic needs, right to supply, right to cultivate plants, share in advancements



This cube is one of three cubes related to democracy as a political system (political system cubes: Human Rights, Participation, Rule of Law).

Participation & Democracy: Democratic institutions need to ensure inclusive empowerment of individuals. Individuals need to be enabled to participate actively in the public realm beyond voting in elections.

Participation is one of the essential principles of democracy. Fostering active citizenship is key for democracy as a way of living and a form of society.

Interpretation - Suggestions



Election, Voting

right to vote, right to be elected, suffrage, franchise, lottery, decision-making procedure



Information Seeking

(active) listening, discussing, deliberating, expressing views, freedom of expression, political news



Demonstration

power to protest, right to association, attending (un)lawful demonstrations, civil disobedience, alternative participation, non-institutional participation



Bring in your Ideas

designing the future, pursuing your own ideas, seeking solutions, agenda-setting



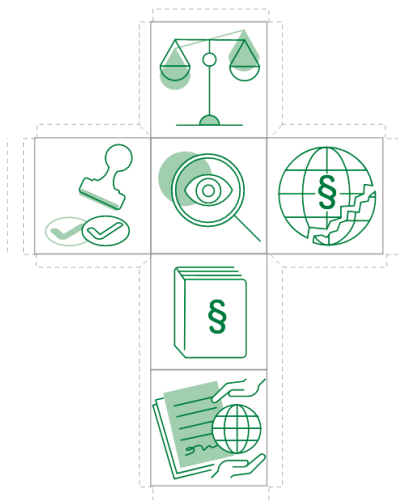
Discussion

freedom of opinion, being ambivalent, evolving ideas, exchange of argument, different points of view



Speak up

expressing views, taking action, freedom of expression, fighting for your beliefs



This cube is one of three cubes related to democracy as a political system (political system cubes: human rights, participation, rule of law).

Rule of Law & Democracy: Enforcement of Equality before the Law, and due process of the Law

Rule of Law is one of the essential principles of democracy. Legal certainty is essential for a functioning constitutional state and offers individuals and social actors protection from being subjected to arbitrariness.

Interpretation - Suggestions



Laws, Regulations

law and order, constitution, je jure regulations, principle of legality, binding the state by law



(In)Equality, (In)Justice

fairness & unfairness, power balance & imbalance, trade-offs, considerations



Transparency

investigation, transparency of the law, transparency and accountability of the authorities



Global Inequality

trade-offs, negative effects of globalization, negative spillover effects, double standards



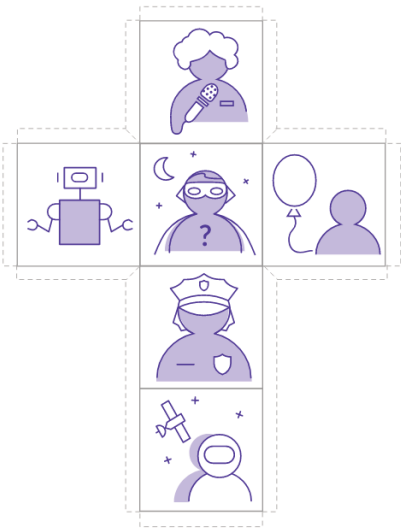
Checks and Balances

dual control principle, four-eyes principles, double check, anti-corruption measurements



Global Law

globalization of law, international provisions / contracts / agreements / standards, courts on human rights



This cube is one of three cubes related to individuals & interactions (individuals & interactions cubes: actors, emotions & motivation, dynamics & power relations).

Actors & Democracy: Democracy and stories about democracy need persons or members of groups that act or are addressed by acts of others. This cube covers a range of actors and figures.

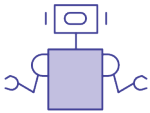
Democracy is constituted by its members who take part in political decision-making. Acknowledging diversity of individuals and their different perspectives is key to cultural diversity, which is a value embedded in democratic citizenship.

Interpretation - Suggestions



Narrator

journalist, giver of information, observer, newsperson, reporter, social media influencer



Stranger

newcomer, alien, foreigner, robot, artificial intelligence



Officer

policeperson, guard, law-enforcement, politician, public servant



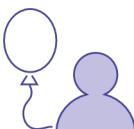
You

self-chosen actor, someone you know, hidden figure, unknown actor



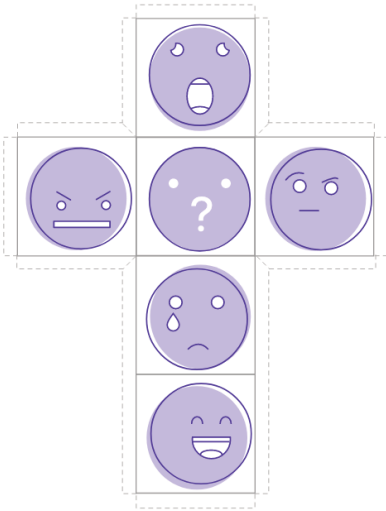
Explorer

astronaut, change of perspective, voyager, tourist, traveler, scientist



Child

childhood, the inner child, next or future generation(s), playful character



This cube is one of three cubes related to Individuals & Interactions (Individuals & Interactions cubes: Actors, Emotions & Motivation, Dynamics & Power Relations).

Emotions / Motivations & Democracy: events and actions do not take place in empty spaces, they are triggered and evoke emotions or different views and attitudes. This cube covers the wheel of emotions and motives for action.

Democracy requires pluralism of actors and ideas, and our willingness to engage in dialogue. Cultural diversity is based on the conviction that differences of opinion and conflicting perspectives exist.

Interpretation - Suggestions



Joy

cheerfulness, happiness, delight, openness, optimism, pride, pleasure, relief, euphoria, admiration, satisfaction



Rage

anger, outrage, dislike, hostility, disgust, envy, jealousy, hatred, confrontation



Critical Thinking

surprise, scepticism, consideration, assessment, appreciation of values, trade-off, confusion



Fear

horror, alarm, anxiety, distress, surprise, disbelief, shock, worry, uneasiness



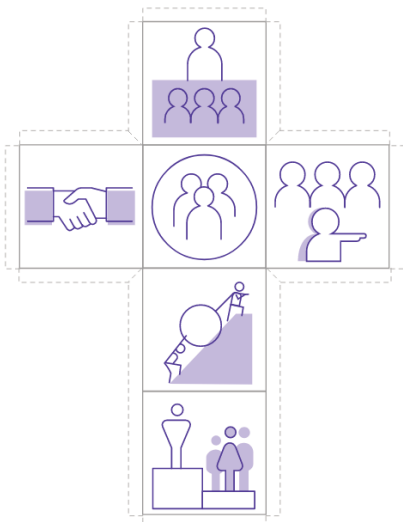
Sadness

disappointment, shame, neglect, sympathy, loneliness, suffering, regret



Our own Emotion

any emotion, suppressed emotion, rational, projection face



This cube is one of three cubes related to individuals & interactions (individuals & interactions cubes: actors, emotions & motivation, dynamics & power relations).

Power Relations / Dynamics & Democracy: people interact with each other in a certain way, are partners or opponents, and encounter each other in different ways. This cube covers different dynamics which could take place at the level of individuals or structures.

Democracy combines descriptive and normative elements, two normative principles of democracy are inclusion and equality. Individual inequalities can be a sign of diversity, structural inequalities are often a challenge to inclusion and equality in democratic systems.

Interpretation - Suggestions



Community

network, solidarity, standing together, collaboration, ingroup, closed circle, belonging



Hierarchy

power imbalance, power group, membership in organizations, representation



Agreement

deal, settlement, hand-shaking, bargaining, partner, associating, consent, consensus, compromise



(In)Equality

(un)equal, hierarchy, structural discrimination, power differences, power gap, power (im)balance



Cooperation

accomplishing shared goals, solidarity, commitment not to be a bystander, get into action



Leadership

group leader, disparity of power, access to power, pointing out, pointing at someone



This cube is one of three cubes related to anchors (anchors cubes: policies, places/locations, challenges & threads).

Policies & Democracy: political institutions and processes are not independent of issues. Political decision-making determines how we live together in many areas of daily life. This cube covers different policies, i.e. topics.

Democracy can be seen as a form of governance which consists of polity (form of governance), policy (topic of governance), and politics (process of governance). Different policy areas are characterised by area-specific conflicts of interest, power struggles, regulations, and procedural rules.

Interpretation - Suggestions



Health

medical care, illness, medicine, health system



Legal Status and Regulations

identity card (ID), passport, migration policy, citizenry, city card, resident card



Money and Employment

payment, financial security, government aid, financial independence



Housing

housing policy, social housing scheme, security, home, poverty, wealth



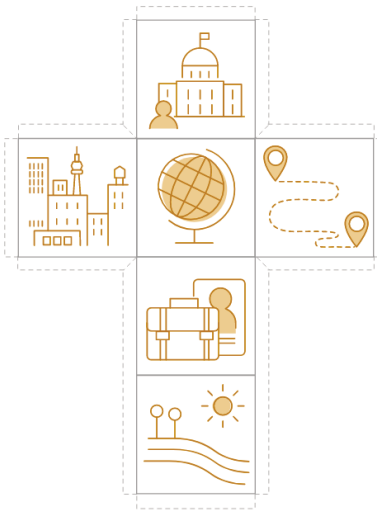
Family Policy

caregiver, social care, social security, welfare, solicitude



Accessibility

non-discrimination policies, inclusion, para-sport, handicap



This cube is one of three cubes related to anchors (Anchors cubes: Policies, Places / Locations, Challenges & Threats).

Places / Locations & Democracy: think globally, act locally or vice versa. This cube covers different symbols for places or locations, applying different meanings to space.

Democracy as a form of governance can take place at different levels: at the local level, at regional levels, state level, transnational or supranational level, as well as at the global level. Democracy as a way of living can take very different forms, also but not only depending on the space and environment we live in.

Interpretation - Suggestions



Public Building

school, public office, prayer house, library



Global

international, world-wide, without borders



Urban Places

city, metropolis, centres, skyscrapers, densification



Travelling

migration, freedom of movement, trip, journey



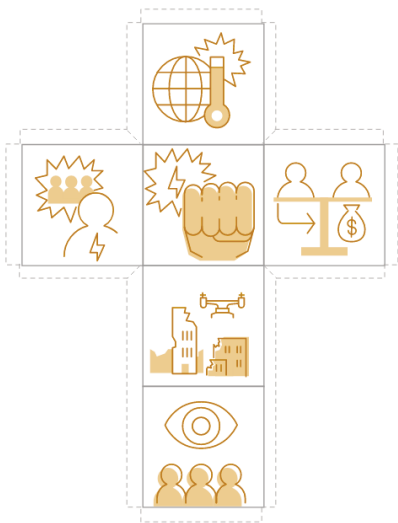
Route

mobility, space, physical distance, planning, map, digital connectivity, digital sphere



Outdoor or Rural Places

public space / sphere, nature, outside, homeless, parks, recreation



This cube is one of three cubes related to anchors (Anchors cubes: Policies, Places / Locations, Challenges & Threats).

Challenges and threats to Democracy: democracy does not exist by itself, it needs active citizens, a vibrant civil society and institutions that bring the concept and its principles to life. This cube covers different challenges democracies are facing today.

The fundamental norms and principles of democracy require well-working institutions to be put into practice. Quality of democracy is determined by legal frameworks and an atmosphere of living together. A lack of security or prosperity can be just as challenging as an increasing polarization or brutalization of opinion.

Interpretation - Suggestions



Populism

opinion former - opinion leader, speaking in the name of others, polarization, anti-pluralism



Surveillance

transparent citizen, freedom - security, monitoring, digital surveillance



Life-threatening Situation

war, conflict, aggression, danger to life, right to life, reasons to seek refuge



Global Warming

climate refugees, war over resources, climate injustice, disaster, rising sea level



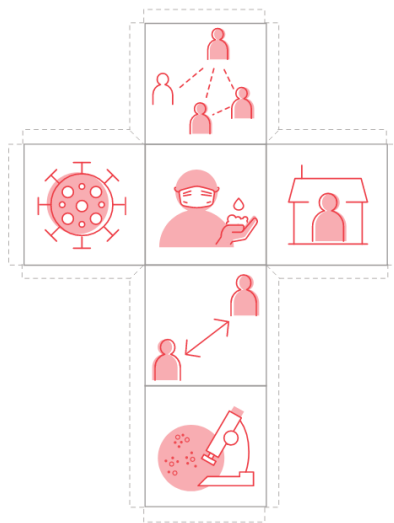
Violence

conflict, violent clashes, bodily violence, physical force



Bribery

corruption, nepotism, collusion, lobbyism

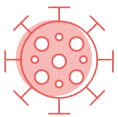


This cube is not part of the standard set of DEMODICE cubes.

Pandemic & Democracy: massive restrictions on individual freedoms and lifestyles, intra-European borders closed to EU citizens*, shutdowns, increase in tracking and surveillance, physical and social distance measures. This cube covers different symbols related to pandemics, it was created in relation to the Covid-19 pandemic in 2020.

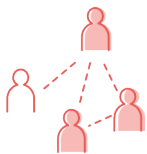
In democracies, any restrictions on human rights and individual freedoms must be particularly justified. Any restrictions have to be weighed against the wellbeing of the community and must be in accordance with the criterion of proportionality.

Interpretation - Suggestions



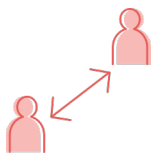
Virus

covid-19, virology, pandemic



Contract - Tracing

corona-apps, digital surveillance, data analysis, being connected in distance



"Keep your distance."

physical distance, social distance, isolation, 1.5-2 meters



Isolation

systematic shutdown, quarantine, home office, home schooling



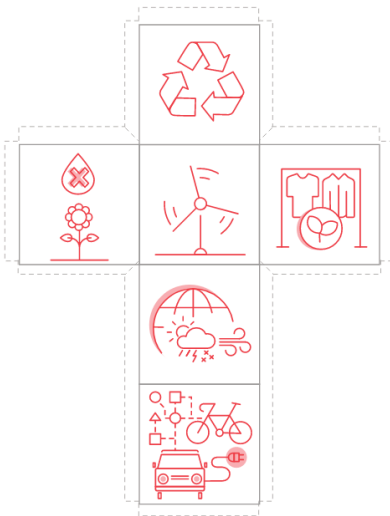
Protective Measures

hygiene rules, wear a mask, wash your hands, no physical contact, physical distance



Research

virology, virologists, virology, discovery, vaccination



This cube is not part of the standard set of DEMODICE cubes.

Sustainability & Democracy: within the topic of sustainability, questions of environmental justice are key. Climate change and global warming has led many people, not only young people, to demand changes and to oppose established structures. This cube covers different symbols for discussions about sustainability and ecological justice.

Democracy aims at upholding human dignity through self-determination. There are always trade-offs between different interests. Positions of living persons are opposed to each other, but there is also a discussion about how perspectives of future generations could be integrated more systematically into democratic decision-making processes.

Interpretation - Suggestions



Recycling

circulation, recycling, circulation economy, waste, product labeling



Energy

sustainable energy, energy production, energy policy, location



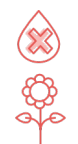
Global Weather Changes

weather phenomena, global weather changes, storms, heat waves, droughts, hurricanes



Mobility

public/private transport, green mobility, electric vehicle, plug-in hybrid vehicle, carbon-free fuel, bike, E-bike, cycle track



Ecological Destruction

agriculture policy, food production, pesticides, weeds, out of balance



Consumerism

organic / sustainable fashion, consumption, globalized world, market economy, progress, development, value-chain